



CONTEX EXPERTS

Product catalogue



Protection to staff, machinery,
buildings and facilities.



Table of contents

4	About Contex Experts
5	Our experts
6	Introduction to safety at work
8	Do certificates matter?
10	Flexible or steel barriers
12	Advantages of flexible barriers
14	Flexible barriers Hard-Flexx®
30	Hard-Flexx® - what makes it different?
32	How are Hard-Flexx® barriers tested?
34	Column protection in warehouses
36	EOS® pole elastic protection
38	Accidents at work
39	Introduction to new products
40	Intralogistics accessories
44	Logistics accessories

About Contex Experts

Contex Experts is engaged in supply and installation of specialized products for industrial companies that have a real impact on safety in your workplace. Our manufacturing experience dates back to 2007, when we began providing metal construction services in the European market.

AS THE FIRST IN POLAND!

We are a rapidly growing, first manufacturer of flexible barriers in Poland. Our flagship product range is Hard-Flexx®.

Our portfolio also includes fencing for machinery and plant infrastructure, both from our own production and from TROAX, of which we are an official distributor.

QUALITY FIRST

We constantly take care of the development of our offer. In addition to implementing new products, we conduct research, tests and improve our materials. Our goal is to meet customer needs and follow innovative solutions.



Our experts

PRODUCTION

**Łukasz
Barabasz**

Construction
Engineer



"Our products are made from the highest quality semi-finished products and components. Our flexible barriers are made of durable and long-lasting plastics, which comprise a proprietary polymer blend called Hard-Flexx®. It provides effective protection against accidents. Thanks to our experience and modern technology, we are able to provide you with the best flexible barriers on the market. We are confident that our products will meet your expectations and ensure safety in your enterprises."

ASSEMBLY

**Jarosław
Kujawa**

Head of
Installation



"Our qualified and experienced team consistently ensures professional and fast installation, even in the most demanding conditions. We have modern tools and equipment to make installation smooth and trouble-free. Our goal is to ensure safety and convenience for your employees."

SALES

**Roman
Bratos**

Director
of Sales
Department



"Our flexible barriers are made of durable and long-lasting plastics that provide effective protection against accidents. We offer a wide range of Hard-Flexx® flexible barriers and EOS® flexible pole guards that can be individually modified. We also have other safety products available and we can customize them to meet your needs and requirements. Our sales team is experienced and ready to help you choose the right solutions."

Introduction to safety at work

Warehouses are great places to work, but they can also be dangerous. The Occupational Safety and Health Administration (OSHA) lists warehouses and storage facilities as some of the most dangerous places to work in the United States. Working in a warehouse can involve heavy lifting, difficult driving conditions and uneven surfaces. With this in mind, it's important that you keep your employees safe at all costs! Here are some solutions that can help you do so.

FLEXIBLE BARRIERS

Flexible barriers are used to prevent vehicles from entering restricted areas and to enclose pedestrian routes. They are also known as safety gates and parking bumpers. You may have seen them at warehouse entrances or loading ramps, where they prevent damage to vehicles, cargo and infrastructure. Flexible barriers are made of a special polymer compound. As a result, they have shape memory and return to their original shape after an impact.

BENEFITS OF FLEXIBLE BARRIERS

They are lightweight but durable - they do not rust over time, so there is no need for maintenance as with steel guards. Studies of flexible barriers show that they absorb about 88% of the energy from an impact. With flexible barriers, there is no need to repair the floor, as the energy of the impact is spread over the entire length of the barrier, which then returns to its original shape. This makes them ideal for warehouses looking after their bottom line by reducing the costs associated with repairs and stopping production, or blocking a repair area. Steel-level strength - Despite its lighter weight, the polymer compound is no match for its steel counterpart in terms of strength and impact protection. Flexible barriers on all the tests we have conducted perform, at worst, the same as steel barriers. Frequent doubts about flexibility, which for many equates to reduced strength, are dispelled upon contact with the barrier or the results of their tests. Cost savings - Flexible barriers are undoubtedly an investment that will save a lot of money during operation. The polymer compound is very durable so that the installed elements will provide security for years. Flexible bumpers are lightweight and easy to install, making them a versatile option for any warehouse. They are safe for people, equipment and goods. They don't have sharp edges like traditional steel bumpers - instead, they are made of a flexible material that

minimizes impact on something solid, like a wall or rack. Flexible bumpers are ideal for warehouses, causing no damage to walls and building infrastructure when forklifts or pallet trucks, for example, bump into them accidentally.

PROTECTION OF POLES

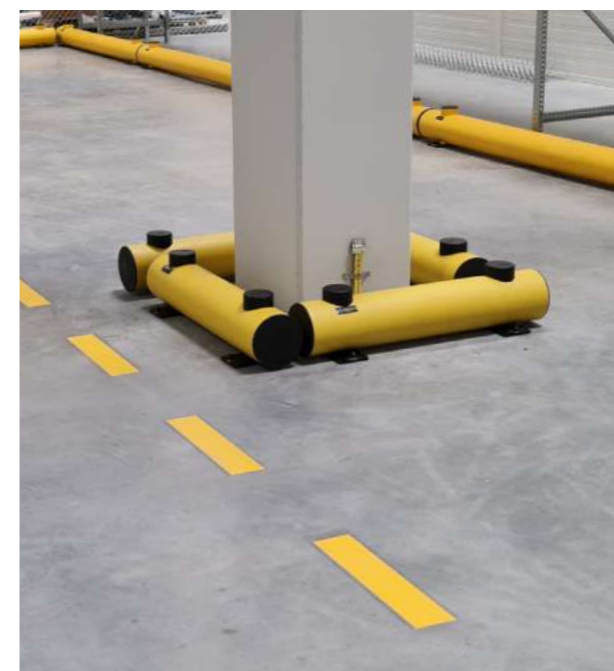
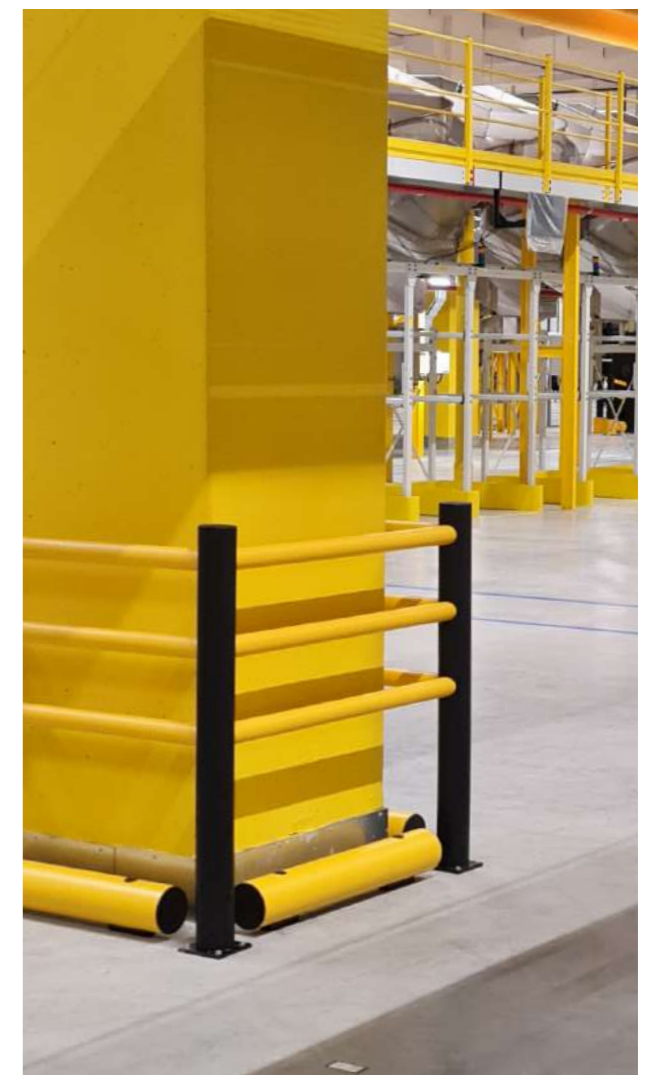
Pole guards are designed to protect workers from striking freestanding steel poles. They are lightweight and easy to use, making them an effective way to keep workers safe while on the job. Steel pole safety devices are also made from a variety of materials, including rubber plastic or foam. Some pole safety devices can be permanently installed as part of the warehouse design; others can be easily removed for convenience during off-duty hours or if you need more space in the warehouse for storage purposes.

SECURITY FENCES

The fences are primarily designed to prevent damage to machinery, or robots, from outside threats and to enclose the space for unauthorized access. This results in minimizing the impact on adverse interference in the production process. Their design makes them suitable for all industries and for most currently available robots and machines. Modular system safety fences are constructed with panels of different sizes and strengths to optimize the equipment for your industry.

SAFETY

Security at work is a priority for most companies and an aspect that should not be underestimated. However, access to information in the field of innovative security is still difficult and finding the optimal solution is not at all easy. However, knowledge related to securing employees, equipment, goods or infrastructure is essential for good business management, minimizing downtime, and avoiding accidents. Nowadays, with the business world becoming increasingly demanding and competitive, having the right safeguards and an adequate security system becomes crucial for pre-business survival. Many companies are unaware of the full potential of modern technologies and solutions that can enhance workplace security. For this reason, an increasing number of entrepreneurs are seeking the help of safety and security specialists. At our company, we offer assistance and support in protecting employees, equipment, goods and infrastructure. Thanks to our knowledge and experience, we are able to offer an optimal solution, tailored to the individual needs and requirements of each company. We encourage you to contact us today so that we can help you minimize risks and ensure a high level of security in your enterprise.



Do certificates matter?

Taking care of the lives and health of employees, is a key responsibility of employers. When running a business, attention should be paid to occupational safety. When securing halls or warehouses, it is worth making sure that the products being installed are certified to ensure quality, the necessary tests and attention to detail. By presenting a product certificate, a company guarantees its potential buyer high quality and attention to detail to ensure that the product offered is complete, tested and of quality. In the industrial security sector, certification is even more important, it illustrates which products have already been completely tested and meet generally accepted standards and requirements.

CERTIFICATE SGS

SGS, is a world leader in certification, testing, verification and inspection. As a benchmark for reliability and quality for many companies, they divide their services into the following categories: inspection, testing, certification and verification. In its operations, SGS documents processes, procedures and accountability for achieving quality principles and objectives.

CERTIFICATION IS AWARDED AFTER PASSING AN AUDIT AND MEANS THE FOLLOWING BENEFITS FOR THE ORGANIZATION:

- More efficient operations
- Meeting statutory and regulatory requirements
- Reaching new markets
- Identification and mitigation of risks

Our company has carried out all the necessary research and testing, making the Hard-Flexx® and EOS® product ranges certified products, verified by SGS.

CERTIFICATE LL-C

The certification performed by the LL-C Certification organization, is one of the most important pieces of information for partners and customers of the audited company. With increased competition, LL-C certification illustrates the highest quality of goods or services, and the desire for continuous product improvement. Although certificates are issued for a period of three years, companies wishing to hold this distinction must be prepared for annual audits to determine the current status and quality of products.

HIGHLIGHTS OF ISO 9001 CERTIFICATION OF LL-C:

- The crowning achievement of the company's efforts in **pro-quality activities**
- Existence of an **effective quality management system**
- **Strengthen the organization's image in the eyes of customers**
- **Impact on ecology, reduction of post-production waste and returns**

At every stage of production and assembly, Hard-Flexx® and EOS® products meet the standards and requirements set by the LL-C organization. Contex Experts places special emphasis on presenting the benefits and quality of its products. The entire process of production, assembly, testing meets all possible standards and requirements among certification companies, and institutions that supervise the safe preparation of products. We are committed to offering our customers products that are fully tested and suitable for continuous operation and protection of people, infrastructure or goods. The organizational culture of our company is based on taking care of every detail of our activities for the sake of the health and safety of our employees.



Flexible or steel barriers

When planning the organization of work in the warehouse, the aspect of safety must not be forgotten.

It is very important to use technical solutions to eliminate risks. A newer form of security - flexible barriers - offsets the disadvantages of steel barriers. When using them, there is no need for further financial outlays. The material of which the flexible barriers are made absorbs energy from the impact, so they are not deformed and damaged. After the impact, they return in shape to their original version. Their construction allows for easy assembly and disassembly. These barriers are resistant to atmospheric conditions and corrosion, so they can be installed both inside and outside the halls.

SAFETY BARRIER MARKET

The market for safety and barriers continues to grow, with flexible and steel bumpers now available. Barriers manufactured from steel are still the most popular and most frequently chosen option. This is primarily due to financial considerations and the industry's habituation to this form of security. The second type of bumpers - flexible - have been on the market for a relatively short time. This is a new and interesting form, the group of supporters of which is constantly growing. This is related to the properties of the barriers, after impact they do not deform, and are resistant to corrosion and scratches.

STEEL BARRIERS

Steel barriers have become firmly established in warehouses around the world and have been protecting against hazards for many years. The lower cost of purchase and installation is definitely in favor of them. The problem arises with continued use, as the barriers must be maintained and replaced on an ongoing basis. If the barrier is hit, it is deformed or destroyed. In addition, the high force of the impact very often results in pulling the mounts out of the floor, forcing the floor to be repaired and new barriers to be installed, which means additional financial outlay.

FLEXIBLE BARRIERS

A newer form of protection - flexible barriers - offsets the disadvantages of steel barriers. When using them, there is no need for further financial outlays. The material of which the flexible barriers are made, absorbs

the energy from the impact so they do not deform and change. After impact, they return in shape to their original version. Their construction allows for easy assembly and disassembly. These barriers are resistant to weather conditions and corrosion, so they can be installed both indoors and outdoors.

OUR HARD - FLEXX® BARRIERS ARE CHARACTERIZED BY:

- High mechanical strength in relation to weight
- Resistance to atmospheric conditions, active environment, corrosion and UV radiation,
- Steel-level strength with significantly lighter weight,
- Ease of assembly and disassembly
- Durability of color and no need for painting
- Energy absorption during impact
- Flame retardant

The use of guardrails is absolutely mandatory to be able to maintain safety in a production plant or logistics hall. However, the discretion remains in the choice of steel or flexible bumpers. With current technology and analyzing the advantages and disadvantages of the presented solutions, one is more inclined to choose flexible barriers. Despite the initial higher cost of purchase and installation, the lack of the need for subsequent replacement and repair makes their use much more profitable in the long run of use.





Advantages of flexible barriers

Usually, our customers are not aware of the benefits of equipping their halls and warehouses with flexible barriers before the cooperation starts.

In a previous post, we outlined the differences between commonly used steel barriers and an innovative solution - flexible barriers. The Hard-Flexx® product range is ideally suited to the operations of halls and warehouses. Its advantages have been refined with functionality and our customers in mind.

EASY TO INSTALL DESIGN

Hard-Flexx® flexible barriers are designed for easy assembly of their modules. They consist of structures that can be customized and used in variety of configurations. This also opens up the possibility of enlarging the structure, as there is an option to add and easily mount additional protective elements at any time. Another very important aspect is the possibility to replace a damaged element. It is not necessary to remove the entire structure, but only that one flawed element and replace it with a new one.

THE FLOOR IS NOT DAMAGED

Among the most common downsides of safety steel barriers are the constant problems with the ground and pulling out of anchors in the event of a collision. This problem has been eliminated, due to the absorption by all elements of about 88% of the kinetic energy from an impact. This avoids the cost of repairing the substrate and wasting time in which a certain part or the entire hall must be taken out for service.

LIGHTER THAN STEEL

Thanks to their design, flexible barriers are much lighter than steel barriers and at the same time they provide more protection and are stronger. Their weight allows to offset the cost of delivery and much easier installation.

STEEL-LEVEL STRENGTH

Despite its lower weight, the polymer compound is no worse than its steel counterpart in terms of strength and impact protection. Flexible barriers, in all the tests we have conducted, perform at worst the same as steel barriers. Frequent doubts about flexibility, which for many equates to reduced strength, are dispelled upon contact with the barrier or the results of their tests.

ABSORPTION OF ENERGY FROM IMPACT

Our barriers are created from a highly flexible polymer blend that has the property to flex and return to its original shape after an impact. It enables it to cushion the tremendous force of an impact ensuring safety and returning to its form while continuing to be a unit of protection for people, infrastructure, goods or machinery. Steel barriers are automatically dented or damaged after impact and need to be replaced. The innovative action of the polymer means that in the case of flexible barriers there is not even a trace after the impact, which eliminates the risk of accidents and maintains the continuity of work in the facility.

MINIMAL IMPACT ON THE ENVIRONMENT

The production of flexible barriers, or rather the heating processes in the production of the polymer compound, has far more beneficial effect on the environment, than

the traditional production of steel products. Thanks to lower weight and the very infrequent need to replace individual components, transportation emits much less pollution.

NO CORROSION

The effect of corrosion has been proven in the environment on the degradation of the material. Our barriers are completely resistant to these actions and retain their advantages even in the least favorable conditions. Hard-Flexx® barriers can be installed both indoors and outdoors, as they are resistant to all weather conditions.

UV RESISTANCE

Our flexible barriers are distinguished by their visible and distinctive yellow color. We were very keen that this color should not fade or show any defects over time, so that Hard-Flexx® barriers are protected against the harmful effects of sunlight. The barriers retain their properties regardless of weather conditions.

CERTIFIED PRODUCT

Before launching our products, we begin the analysis and design process, which culminates in independent testing. All of our products are certified to ensure that our Hard-Flexx® barriers meet all safety requirements of various sectors. In testing and certifying our products, we work closely with companies such as SGS and LL-C Certification.

EXCELLENT VISIBILITY

The color of the barriers and their design have been adjusted to maximize their visibility. This automatically increases their level of safety in mounted areas. Distinctive and bright colors reduce the number of collisions.

COST SAVINGS

The Hard-Flexx® product range is undoubtedly an investment that will save a lot of money over the life of the barriers. The polymer blend is highly durable, so the installed elements will provide security for years to come.

Flexible barriers Hard-Flexx®

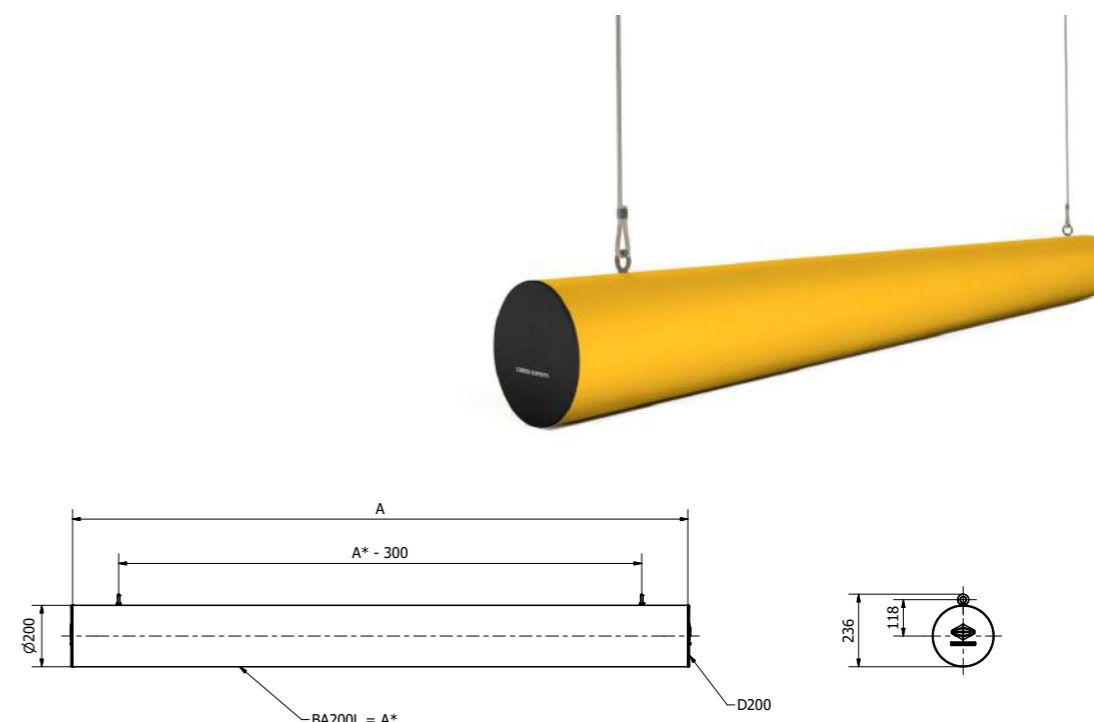
We are proud to present our wide range of flexible barriers. We have flexible barriers of many designs, so we are able to meet the expectations of the most demanding customers.

Our flexible barriers are made of durable and long-lasting materials that provide effective protection against accidents. We offer both standard flexible barriers and special models, such as those with additional reinforcements.

A barrier to protect pedestrians and vehicles from hitting the tops of machinery or infrastructure.



AVIS



Material:
Hard-Flexx® polymeric

Color:
RAL1021

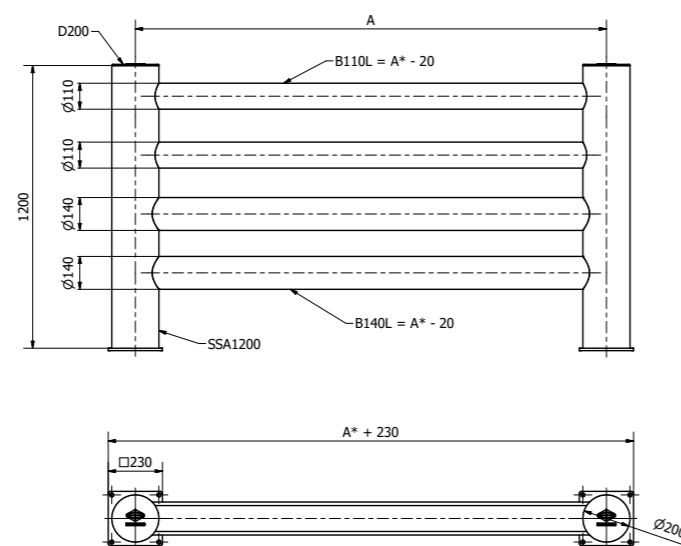
Assembly:
Suspended barrier

Beams Lmax = 2000 mm Ø 110 mm

ARIES



Reinforced pedestrian
barrier in areas with
increased machine and
vehicle traffic.



Material:
Hard-Flexx® polymeric

Color:
RAL1021

Foot dimension:
230 x 230 mm

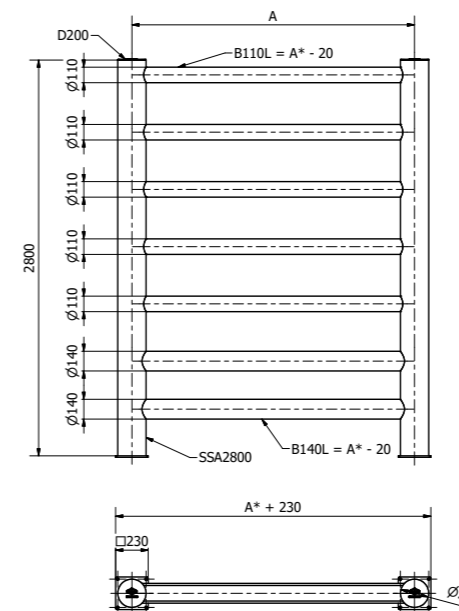
Column H = 1200 mm	Ø 200 mm
Beams Lmax = 2000 mm	Ø 110 mm
Beams Lmax = 2000 mm	Ø 140 mm

System joints
Anchoring to the floor using RLX-12X100 concrete
screws

High barrier to
protect pedestrian
machinery and high
storage areas of
goods.



ARIES 2800



Material:
Tworzywo sztuczne Hard-Flexx®

Color:
RAL1021

Foot dimension:
230 x 230 mm

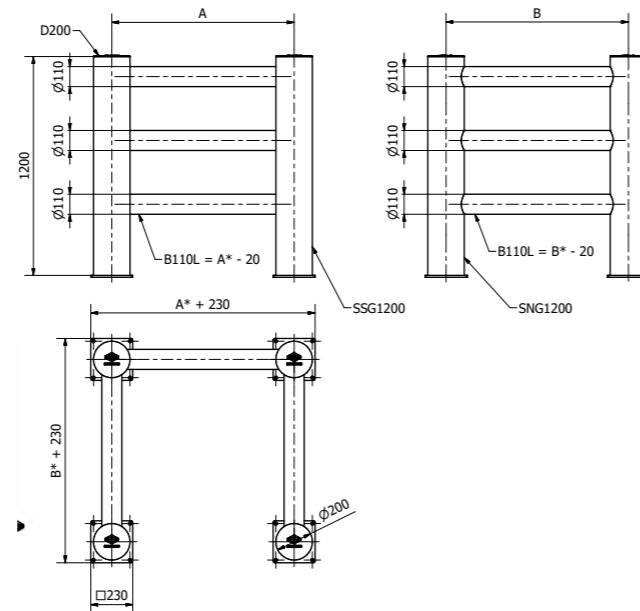
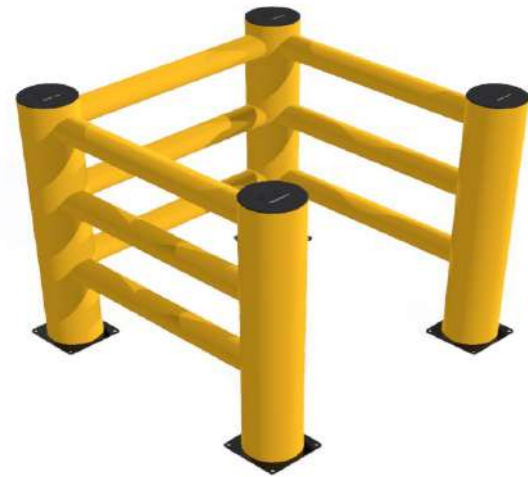
Coloumn H = 2800 mm	Ø 200 mm
Beams Lmax = 2000 mm	Ø 110 mm
Beams Lmax = 2000 mm	Ø 140 mm

System joints
Anchoring to the floor using RLX-12X100 concrete
screws

GEMINI C

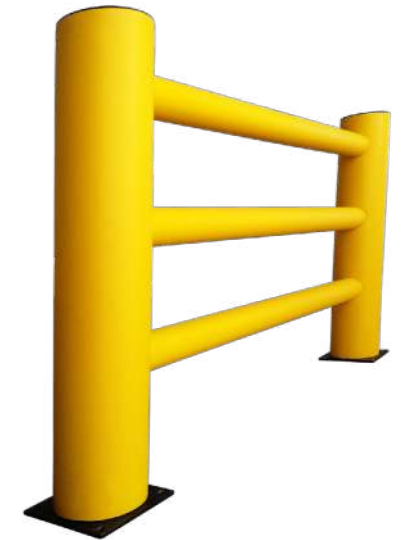
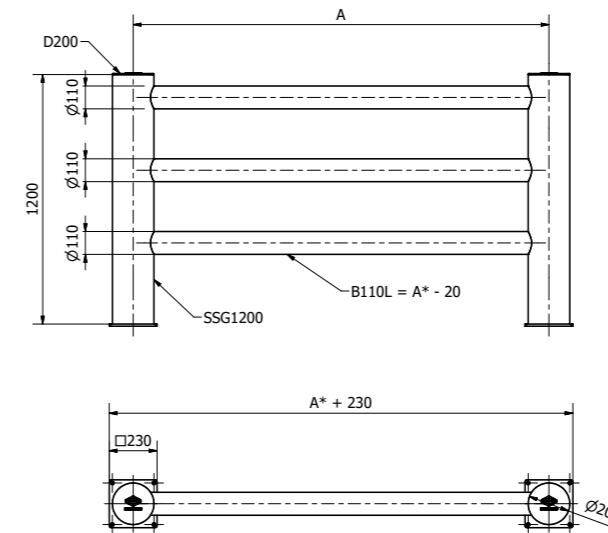


A barrier to protect columns, distribution boxes and other areas in need of security on 3 sides.



Reinforced barrier to protect pedestrian routes on the hall and in the warehouse.

GEMINI



Material:
Hard-Flexx® polymeric

Color:
RAL1021

Foot dimension:
230 x 230 mm

Column H = 1200 mm Ø 200 mm
Beams Lmax = 2000 mm Ø 110 mm

System joints
Anchoring to the floor using RLX-12X100 concrete screws

Material:
Hard-Flexx® polymeric

Color:
RAL1021

Foot dimension:
230 x 230 mm

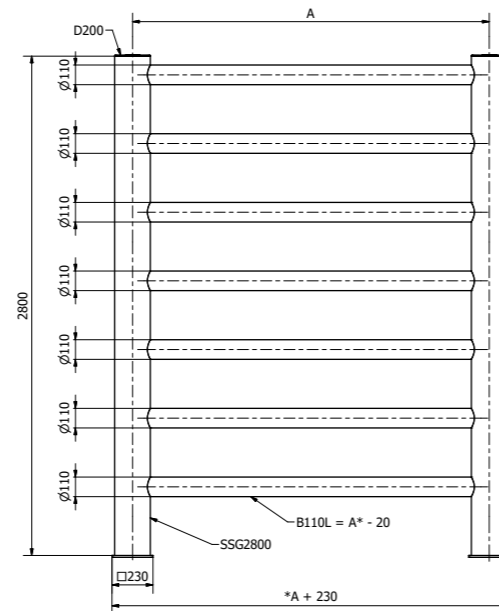
Column H = 1200 mm Ø 200 mm
Beams Lmax = 2000 mm Ø 110 mm

System joints
Anchoring to the floor using RLX-12X100 concrete screws

GEMINI 2800



A high barrier to protect pedestrians, machinery and high storage areas for goods.



Material:
Hard-Flexx® polymeric

Color:
RAL1021

Foot dimension:
230 x 230 mm

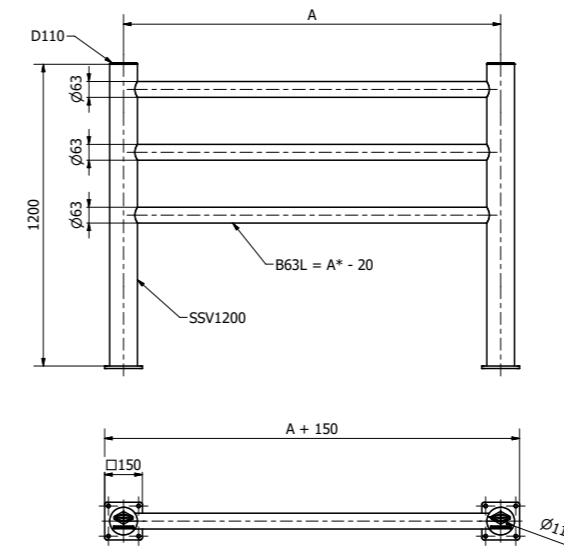
Column H = 2800 mm Ø 200 mm
Beams Lmax = 2000 mm Ø 110 mm

System joints
Anchoring to the floor using RLX-12X100 concrete screws

Barrier to enclose passageways and protect pillars.



VIRGO



Material:
Hard-Flexx® polymeric

Color:
Column RAL9005, Beam RAL1021

Foot dimension:
150 x 150 mm

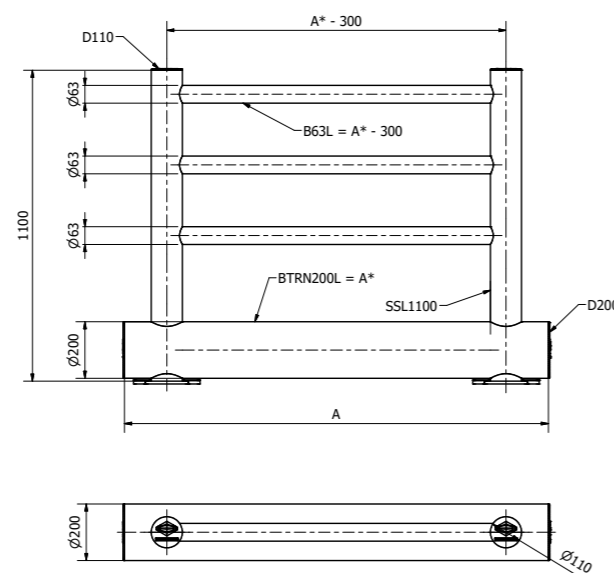
Column H = 1200 mm Ø 110 mm
Beams Lmax = 1500 mm Ø 63 mm

System joints
Anchoring to the floor using RLX-10X100 concrete screws

LEO



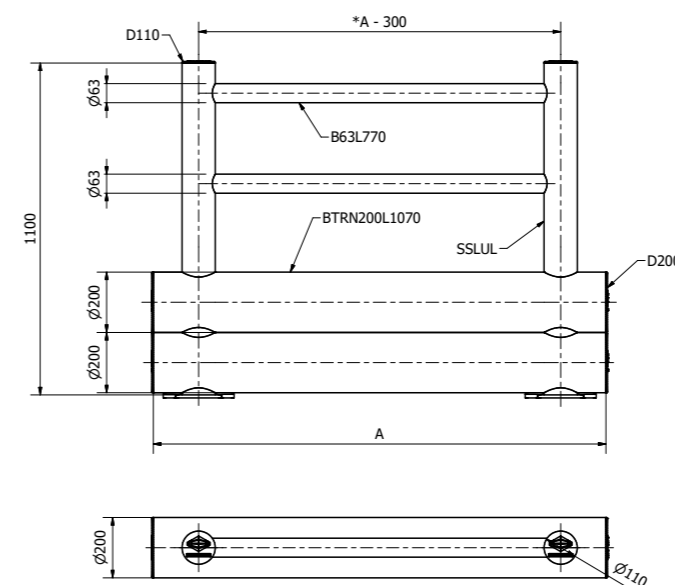
Safety barrier for pedestrians and machinery with built-in curb for impact protection.



Reinforced safety barrier for pedestrians and machinery with built-in curb for impact protection.



LEO ULTRA



Material:
Hard-Flexx® polymeric

Color:
Column RAL9005, Beams RAL1021

Foot dimension:
120 x 260 mm

Column H = 1100 mm Ø 110 mm
Beams Lmax = 2000 mm Ø 63 mm
Beams Lmax = 2300 mm Ø 200 mm

Anchoring to the floor using RLX-12X100 concrete screws

Material:
Hard-Flexx® polymeric

Color:
Column RAL9005, Beams RAL1021

Foot dimension:
120 x 260 mm

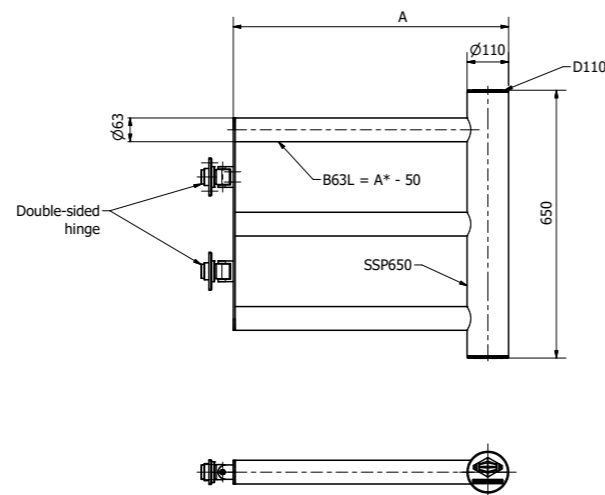
Column H = 1100 mm Ø 110 mm
Beams Lmax = 2000 mm Ø 63 mm
Beams Lmax = 2300 mm Ø 200 mm

Anchoring to the floor using RLX-12X100 concrete screws

PORTA



A security gate that blocks access to the selected space.



Material:
Hard-Flexx® polymeric

Color:
RAL1021, RAL 9005

Foot dimension:
230 x 230 mm

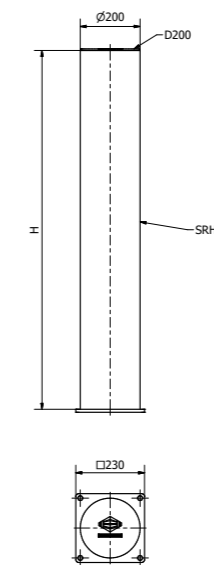
Column H = 1200 mm
Beams Lmax = 1000 mm

Ø 200 mm
Ø 63 mm

A safety post for areas prone to collisions and vehicle impacts.



ROCKY



Material:
Hard-Flexx® polymeric

Color:
RAL1021

Foot dimension:
230 x 230 mm

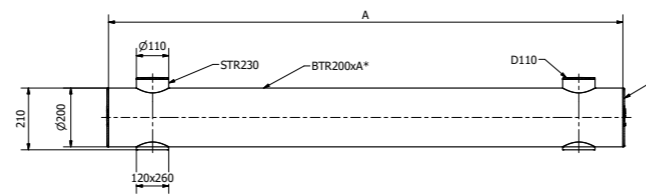
Column H = 1200 mm Ø 200 mm
Column H = 800 mm Ø 110 mm
Column H = 500 mm Ø 110 mm

Anchoring to the floor using RLX-12X100 concrete screws

TAURUS



A curb to prevent forks or other parts of the vehicle from hitting the lower parts of the infrastructure.



Material:
Hard-Flexx® polymeric

Color:
RAL1021

Foot dimension:
Ø 140 mm 120 x 200 mm
Ø 200 mm 120 x 260 mm

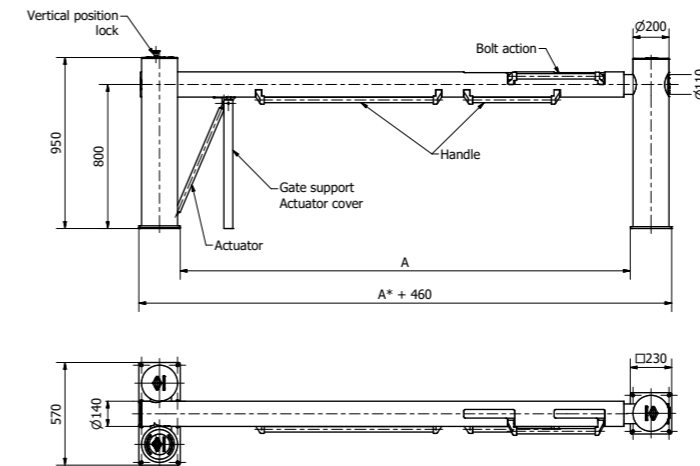
Lmin = 500 mm Lmax = 2000 mm Ø 140 mm
Lmin = 500 mm Lmax = 3000 mm Ø 200 mm

Anchoring to the floor using RLX-12X100 concrete screws

A gate to secure access to the loading dock to prevent collisions.



STELLA GATE



Material:
Hard-Flexx® polymeric

Color:
RAL1021

Foot dimension:
230 x 570 mm

Method of opening:
Assisted by a gas spring

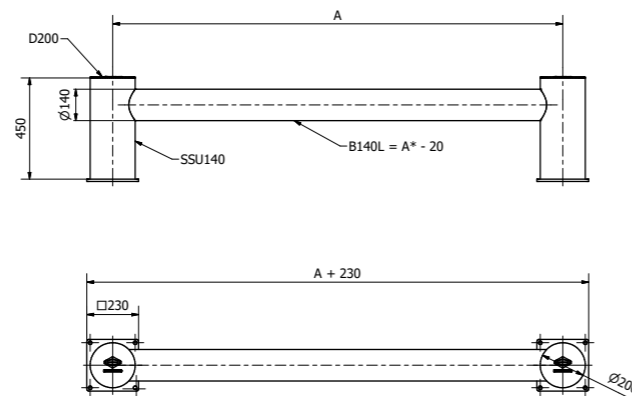
Column H = 950 mm Beams H = 800 mm
Lmin = 2000 mm Lmax = 3000 mm

Anchoring to the floor using RLX-12X100 concrete screws

URUS

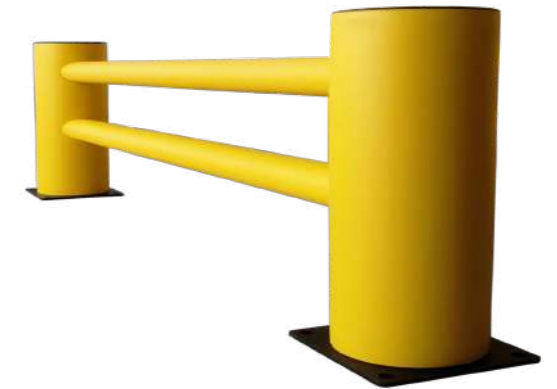
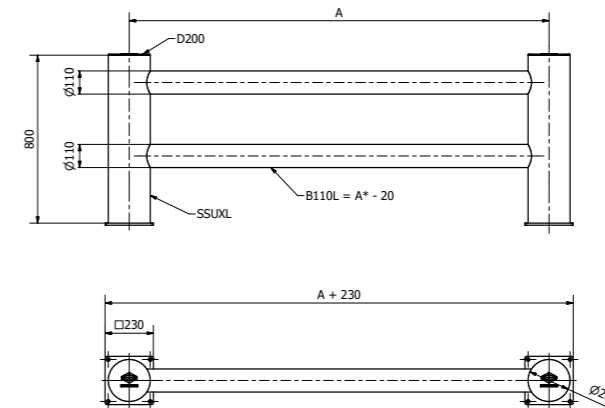


A single barrier to protect low building elements.



A reinforced double railing to protect low building elements.

URUS XL



Material:
Hard-Flexx® polymeric

Color:
RAL1021

Foot dimension:
230 x 230 mm

Column H = 460 mm Ø 200 mm
Beams Lmax = 2000 mm Ø 140 mm
Possible beam order Ø 110 mm

System joints
Anchoring to the floor using RLX-12X100 concrete screws

Material:
Hard-Flexx® polymeric

Color:
RAL1021

Foot dimension:
230 x 230 mm

Column H = 810 mm Ø 200 mm
Beams Lmax = 2000 mm Ø 110 mm

System joints
Anchoring to the floor using RLX-12X100 concrete screws

Hard-Flexx® - what makes it different?

Innovation requires continuous improvement. Our company is aware of this, and regularly develops and cares about crossing new barriers in the development of flagship products. We want our customers to receive the highest quality solutions, in line with the trends of a modern approach to security. After hundreds of hours and tests, we can boast of a new and improved formula for our security features - Hard-Flexx® flexible barriers.

A few months ago we decided to develop a new technology to take security to an even higher level. As the previously used technology did not deviate at all from the global security standards, we did not want to reject it altogether, but only make adjustments to increase the protection of employees, machines, infrastructure, vehicles or goods. The improved formula is still based on the solid foundations of the previously known and appreciated solution - Hard-Flexx® flexible barriers. The newly introduced technology is based on 3 key layers. Each material layer of the improved barriers will be responsible for a different functionality, making the advantages of our barriers even greater.

- **Hard anti-static coating resistant to UV and temperature**
- **Polymer compound with bidirectional shape memory effect**
- **Core that converts kinetic energy into elastic energy**

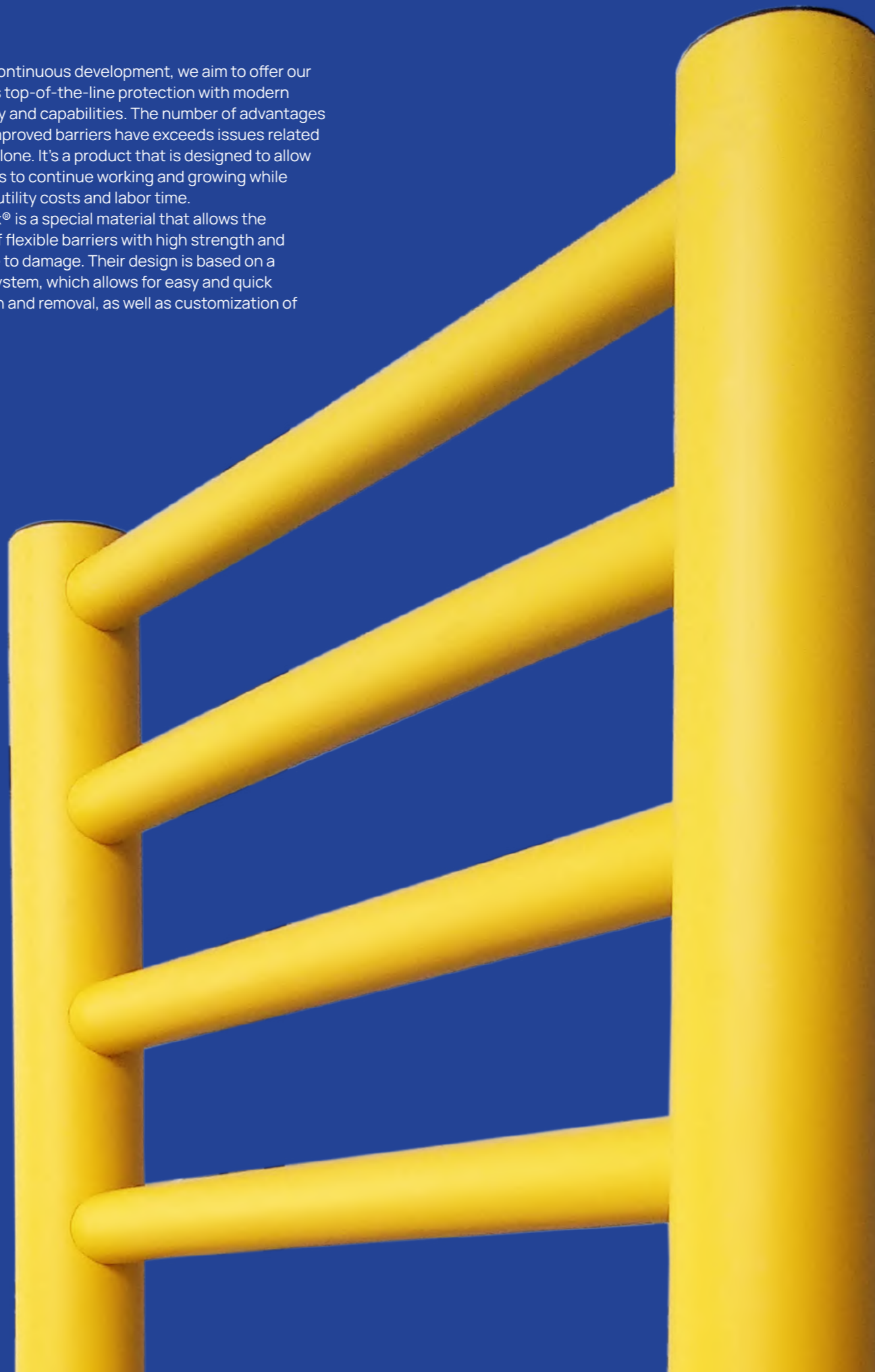
The refined compound on which the improved formula is based is still a blend of hard polyethylene polymers with admixtures. So in this respect, we are using proven solutions that take care of worker safety in many European warehouses. The improved barriers are part of the SMP (shape-memory polymer) trend. This is related to the memory effect, which results in the material's ability to regain its original shape under stimulus. These are active polymers that belong to the group of smart materials. Thanks to the shape memory, barriers are not damaged after impact and return to their original appearance.

Through continuous development, we aim to offer our customers top-of-the-line protection with modern technology and capabilities. The number of advantages that our improved barriers have exceeds issues related to safety alone. It's a product that is designed to allow businesses to continue working and growing while saving on utility costs and labor time.

Hard-Flexx® is a special material that allows the creation of flexible barriers with high strength and resistance to damage. Their design is based on a modular system, which allows for easy and quick installation and removal, as well as customization of barriers.

Compared to traditional metal barriers, Hard-Flexx® flexible barriers offer a number of advantages. The most important element that distinguishes Hard-Flexx® barriers is their flexibility. Because they are made of flexible material, they absorb impact energy, which increases safety for workers and property. In addition, in the event of a collision with a vehicle, these barriers do not permanently deform, meaning that they are able to maintain their original functionality and appearance. Another important distinguishing factor of Hard-Flexx® barriers is their resistance to external factors. The material from which they are made is resistant to atmospheric agents such as rain, wind and UV radiation, which means that these barriers maintain their quality and durability for a long time.

Also worth noting is the ease of installation and removal of Hard-Flexx® barriers. Thanks to their modular design, these barriers can be quickly and easily installed and dismantled as needed. In addition, their lightweight design allows for easy handling and storage.



How are Hard-Flexx® barriers tested?

Our customers often ask us what assurance we have that flexible barriers can withstand the stresses that arise when working in warehouses and production halls, and whether we carry out any research or testing in this direction. Since we work in the safety industry, we pay great attention to this and try to use all available options.

At the very early stage of planning and the development of our special polymer compound, we had to pay attention to many functionalities that flexible barriers must meet. Of course, the most important aspect is the strength and shape memory that we have achieved in Hard-Flexx® products. Equally important are the tests of how the barriers react to various chemicals that may be present at work, and what effect the weather has, so that we can also install the protection outdoors. We could not do all the tests ourselves, so we used the services of experienced companies. The design and calculation office, helped us analyze and calculate key strength tests. As a result, we are confident that our barriers are able to respond appropriately to impacts from forklifts, among other things.

STRENGTH TESTS

As one of the few companies producing flexible barriers, we also ensure maximum certification of our products. We use the services of several companies at the same time to be absolutely sure and compliant, in terms of strength and safety. This way we know that our product is complete, tested and of quality. The world leader in certification, testing, verification and inspection, SGS, is regarded as a benchmark in reliability and quality.

Our company carried out all the necessary research and testing, so that Hard-Flexx® and EOS® product ranges are certified products, verified by SGS. Further testing was conducted for us by LL-C Certification. At every stage of production and assembly, Hard-Flexx® and EOS® products meet the standards and requirements set by the LL-C organization in terms of ISO 9001 certification. In addition to the initial research and testing, and the acquisition of numerous certificates confirming the quality of our flexible barriers, we continue to inspect and test our products, with due diligence for the safety industry. They regularly undergo the necessary tests before launch or after minor adjustments. The most important test is the pendulum test. It involves mounting a barrier at the base of the device and hitting it at the right angle, with the right weight, to get the probable power of the impact, as in the case of incidents on the production floor or in the warehouse. Recently, we decided to record one such test to illustrate what it is all about and to demonstrate what strength Hard-Flexx® flexible barriers can boast. The effects of our activities, you can see by scanning the QR code.



Column protection in warehouses

When working in a warehouse, collisions with freestanding structures are very common. Entrepreneurs are not always aware of the options available to secure such sensitive areas.

Structural columns are the basis for building large-scale halls. Currently, reinforced concrete columns, steel columns or mixed structures are used. Reinforced concrete structures are associated with high strength to withstand static and dynamic loads, are fireproof and resistant to corrosion. They are most often used in facilities that must meet stringent fire safety requirements. Steel columns are also used in the construction of halls, which is often associated primarily with lower construction costs, as they are much cheaper than concrete counterparts. Steel modules are easier to install and are also often used as elements of the roof structure. To increase the level of fire resistance, special foams or paints are used to protect the poles, which involves maintenance. The dense placement of columns certainly contributes to the stability of the entire hall structure. However, in warehouse halls, a dense grid of columns can be quite a challenge in organizing work and space for storage and transport.

IMPACTS ON POLES - CAUSES AND CONSEQUENCES

Poles are an element without which it is impossible to build a large-area hall, just as it is impossible to run an optimal warehouse without the use of forklifts or pallet trucks. The combination of forklifts and pillars in one area, always raises a great risk of accident and serious consequences. Hitting a structural column with a forklift not only leads to micro-damage visually, it can also upset the stability of the column and, consequently, the roof. Even small but repeated impacts can reduce the strength of the column and lead to tragedy. Moreover, in a sudden collision with a pole, the lack of impact cushioning also affects the operator. Stretched cervical vertebrae, strained spine and even mechanical impacts all negatively affect worker's physical health. Voluminous goods, the need for caution, reverse driving, pedestrian traffic, the need to perform work in a fast and efficient manner - all of this makes it necessary for operators to have "eyes in the back of their heads."

HOW TO SECURE THE POLES IN THE WAREHOUSE?

To protect steel pillars or columns from collisions, column guards are used.

Among the structural column bumpers can be used:

- **foam** bumpers
- **steel** bumpers
- **wooden** bumpers

EOS® - POLE ELASTIC PROTECTION

An innovative solution for safety, is the use of a modern product - flexible pole covers. Our company has created and designed an ideal product, ensuring safety in halls and warehouses. EOS®, are high-quality protectors, made of energy-absorbing foam, which absorbs the kinetic energy created at the moment of impact. It is an effective protection for workers against dangerous warehouse structures.

EOS® KEY FEATURES:

- Possibility to use the shield **outside and inside** the object
- It is a reusable product, making it an **environmentally friendly material**
- No scratches or need for painting
- Simplicity of assembly and disassembly, without the use of specialized tools
- Significantly **increases security in the warehouse**
- Completely prevents damage to buildings and vehicles

The most important property of using various types of protection is the cushioning of impacts, or the complete avoidance of accidents, while maintaining the integrity of the warehouse or hall. EOS® meets all the necessary safety requirements and is a certified product. It can be configured in countless variants, so it will adapt to any characteristics and capabilities of the hall or warehouse.



Pole elastic protection EOS®

Pole elastic protection EOS® is an innovative solution that has been developed to improve safety in halls and warehouses. These guards are extremely flexible and durable, which means they are able to minimize the effects of workplace accidents.

The main advantage of the EOS® is that it is able to effectively protect pedestrians, vehicles and drivers. In the event of a collision between a cart and an EOS® guard, the impact energy is dispersed along the guard rather than concentrated in one place, reducing the risk of serious injury.

High-quality protectors made of energy-absorbing foam that absorbs kinetic energy at the moment of impact.

EOS®



Material:

Energy-absorbing flame-retardant EOS® foam

Colour:

RAL1021 (possible implementation with black stripes)

Dimensions:

Design for any size pole

Cover H = 2000 mm

Attachment to columns with Velcro seam

Accidents at work

The most important goal of our work and the mission of our company, is to influence safety in companies and strive to minimize the number of accidents. We pay special attention to the companies with which we regularly cooperate and carry out projects. However, we are not indifferent to the data related to the situation of safety at work in Poland and around the world. We analyze trends and current problems in various companies to be prepared to prevent dangerous situations and offer solutions that effectively reduce the risk of occupational hazards.

Data related to the number of accidents in Poland, is selected and analyzed by the Central Statistical Office. Thanks to the reports which are updated and shared on a regular basis, it is easy to examine the current trends and situation in the safety market. Recent years, have seen quite a large number of accidents, broken by a very good year in 2020, when there were significantly less accidents. This was certainly influenced by the global economic situation and the pandemic. However, it should be noted that the lower number of adverse incidents, is primarily associated with greater investment by employers in protective infrastructure at workplaces. Despite these measures, in 2021, the number of accidents increased again by as much as nearly 10%. The first reported quarter of 2022 also exceeds the values in the same period of the previous year, which may herald an upward trend going forward as well. In order to curb this process and regularly reduce the number of such incidents, it is necessary to pay special attention to education or training, but most importantly to infrastructure and safety features of sensitive workplaces.

By far the most common cause of accidents was improper employee behavior. As many as 60.8% of accidents were caused by human error in 2021. This was followed by the improper condition of the material factor, improper willful behavior of the employee and improper organization of the workplace, respectively. Unfortunate incidents caused by human error can only be offset by securing the entire warehouse or production hall, and proper signage and education of employees. Most accidents (including fatalities) were recorded in industries related to construction and transportation. Whether working in manufacturing or logistics facilities, securing the workplace is as advisable and desirable as possible.

Influencing safety in your workplace, has never been so easy. Today's solutions, such as Hard-Flexx® flexible barriers or EOS® pole elastic protection, significantly reduce the risk of accidents. And in the event of any mistake, they make its consequences incomparably less drastic than in the same situation without safeguards. Protection of employees, is a priority these days and an issue to which all companies should pay great attention, so that in the years to come there are fewer and fewer accidents at work.



Introduction to new products

Our company strives to improve its solutions every day and adapt them to current realities, technology and growing customer expectations. This is often difficult and responsible work, not bringing the intended results at the first moment, but developing both our capabilities and product quality.

Every product we bring to the market is subjected to multi-stage testing and certification, to exclude possible risks. Having met Polish and European standards, and often exceeding them, we are confident that we offer a completely safe and effective solutions. The stage of creating a new product, begins with the signaling of needs by our customers. To a large extent, it is the customers who tell us what problems they encounter with current technology, infrastructure and products. Potential problems, become an inspiration for us to find a new result. We try to meet and offer solutions that will fit perfectly into the expectations of customers, but also become universal for many industries and companies. We create multiple configurations of the product to fit different spaces. The design process takes long enough to construct a solution that is safe, fit for purpose, easy to install and transport, and affordable. We do not allow ourselves any oversight or mistakes. In the security industry, everything must be perfected to minimize the risk of accidents or unwanted incidents. The design is followed by the moment of creating a prototype, which undergoes a lot of research and testing. It is necessary to check how it behaves in different atmospheric conditions and, above all, whether it can withstand various types of impacts. Impact testing, is the basic verification before releasing the product on the market. We need to be fully convinced that the flexible barrier or pole guard, is able to absorb impacts of the power that can be expected in a warehouse or production hall. After impacts from different distances and at different speeds, we can be confident in the durability of our solutions.

Before launching on the market, all of our solutions must pass the above process and achieve satisfactory results from each test and examination. Thanks to our strict approach and attention to every detail, our key solutions - the Hard-Flexx® range of flexible barriers, and EOS® pole elastic protection - are fully safe, extremely durable and reliable. Contex Experts strives to respond to the world situation and the needs of entrepreneurs, invariably offering innovative and modern solutions.

OUR PRODUCTS ARE DISTINGUISHED BY:

- **Security** - thanks to our attention to detail, we are confident in the level of security our solutions offer.
- **Durability** - Hundreds of hours spent on research and testing, confirm exceptional durability.
- **Flexibility** - our flagship products, are designed to be reusable and maintenance-free.



What is intralogistics?

Contex Experts is constantly striving to expand its offerings and not to close only to its flagship products - Hard-Flexx® and EOS®. A very important aspect of working in the warehouse and on the production floor, is the approach to intralogistics. But what exactly is it and how to develop it? To all the nagging questions, we will try to answer in this article.

The topic of intralogistics was first addressed in 2004, by the VDMA Mechanical Industry Association of Frankfurt. It was intended to distinguish the logistics of information flow and the correct process of handling goods in industry, commerce or public institutions from logistics and freight transport. Particular emphasis in the area of intralogistics is placed on issues related to transportation, storage of goods and the internal material flow system.

The key tasks of intralogistics include solution planning, automation of conveyor technology in the warehouse, material flow, notification, optimization of control systems and machines, and project implementation. Equal attention is paid to back-end development in software, warehouse management, warehouse management systems, networks, robots, plant engineering. Central to this issue is the flow of materials and internal logistics processes. The entire cycle begins with the receipt of goods, followed by various stages of storage and eventual production. The process ends with the sale and shipment of the finished product.

In our company, we take care to prepare solutions necessary at every stage of intralogistics. In our offer you can find 3 solutions, significantly facilitating the implementation of the tasks of internal flow of goods and logistics processes. The Lock & Stop sign, the TSI Trolley and the Jack Stand trailer support are top-quality products that guarantee the improvement of intralogistics processes in a company.

Intralogistics accessories

Allows you to quickly and effectively secure your vehicle.

LOCK & STOP



- Made: **stainless steel/galvanized steel**
- Increased **durability and aesthetics**
- **Resistance to weather and chemical conditions** of docks
- Secure, **ergonomic** lock&stop locking system in standing position
- **Protected corners**
- **Easily adjustable stop sign height** with secure ball latch

CART TSI

The cart provides fast, convenient and safe transportation of heavy loads.



- Sheet for attaching the **bidon and scanner holder**
- Work surface made of **waterproof plywood and anti-slip**
- **4 swivel wheels with brake** – LE PATH- 125K FI-FK BLICKE
- **2 fixed wheels** B-Path 125F FK BLICKE

A jack stand used to support a vehicle.

JACK STAND



- Adjustable **height**
- **Stainless steel/galvanized steel**
- **High-quality wheels**, lightweight made of solid rubber
- Stainless steel lock to **prevent unauthorized opening**, "one key" lock
- Top surface of the beam protected by a **durable elastic element**
- **Smooth operation of the locking system**

Logistics accessories

Parking lots are an important part of our daily lives. It's where our cars spend a significant amount of time and are also the last place we would want to have a collision. That's why it's so important that you stock your parking lot well with safety devices and devices to regulate the movement and speed of vehicles.

Logistics accessories are key elements for any company involved in the transportation and storage of goods. Among Contex Experts' offerings are various types of accessories that allow efficient and safe work in the warehouse.

Another important product is cable covers. They are essential to ensure the safety of workers who move around the warehouse. Cable guards protect cables from damage, which prevents the risk of electrocution. Bollards are another essential piece of logistics accessories. They are used to stabilize goods on pallets and to prevent goods from moving during transport. Bollards can be made of various materials, such as metal, wood or plastic.

All of the products mentioned are available in different sizes and configurations, allowing them to be tailored to individual customer needs. Contex Experts' offer is constantly being developed and adapted to the changing needs of the market, which makes the company a perfect fit in the logistics accessories industry.

Parking devices, such as speed bumps, are designed to make any parking lot safer and better organized. Their goal is to perfectly match the possible traffic to the area and available space, and by logical layout, we can maximize the use of space to the greatest number of cars. It is also important to enclose spaces for vehicles and pedestrians in an efficient way that will not interfere with each other.

Logistics accessories



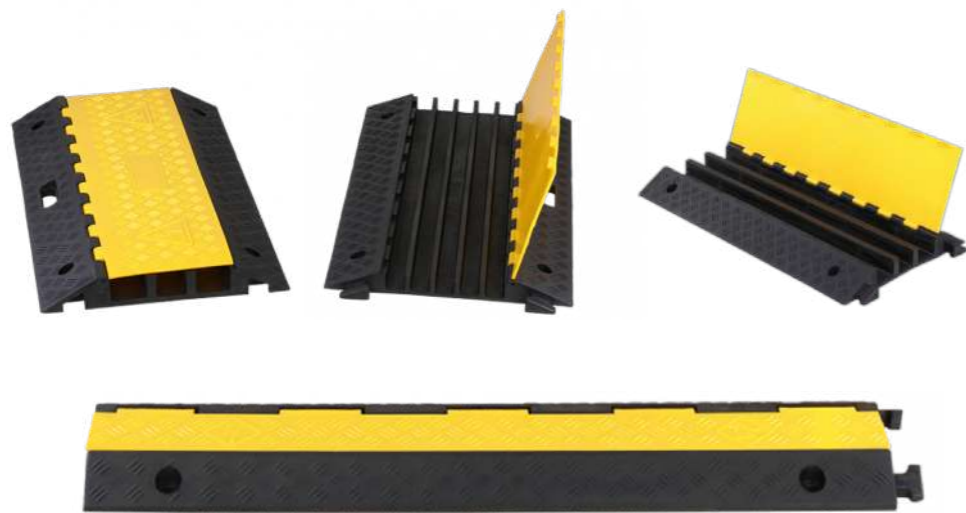
PROTECTION PROFILES



Energy-absorbing warning profiles for protecting and marking dangerous edges. Made of flexible polyurethane foam, they protect property and reduce the risk of injury to workers.

- Profiles are temperature resistant from **-40°C** to **+ 100°C**.
- They can be used both **indoors** and **outdoors**
- They are fire tested and have received a **fire classification. B2 in accordance with DIN 4102**
- Easy installation on **self-adhesive tape with acrylic adhesive**, resistant to aging, light and adverse weather conditions

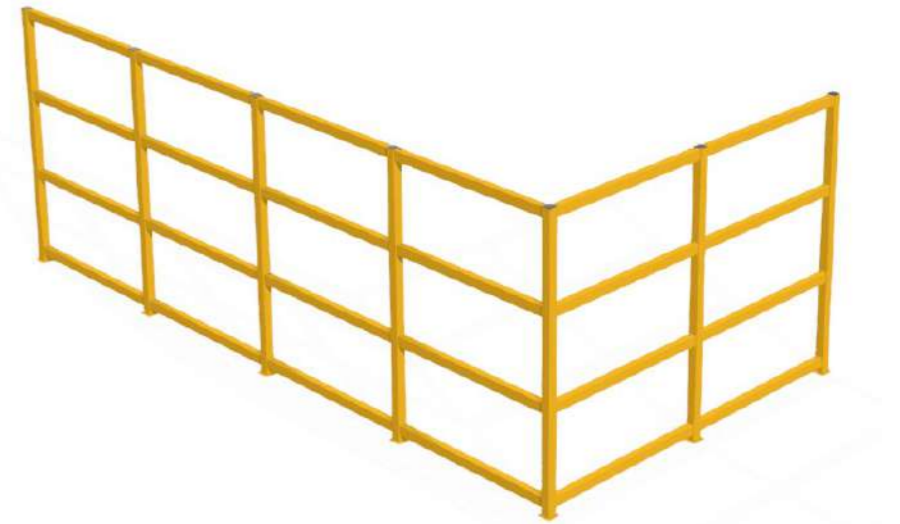
CABLE COVERS



Modular cable overrun covers with a cover provide solid protection for cables and rob wires in the path.

- Individual elements can be hooked together **via connectors** on the sides
- Various combinations allow the **cables inside** to be safely protected
- Lids made of **polyethylene** with handle
- The main part of the element was created from **recycled rubber** with 4 holes
- Resistant to **heavy loads**

SYSTEMIC BARRIERS



Barriers are an essential part of securing pedestrian routes and rooms.

- Bumpers powder-coated **RAL 1021** + any **RAL** color
- **Galvanized steel**
- **Zinc phosphating**

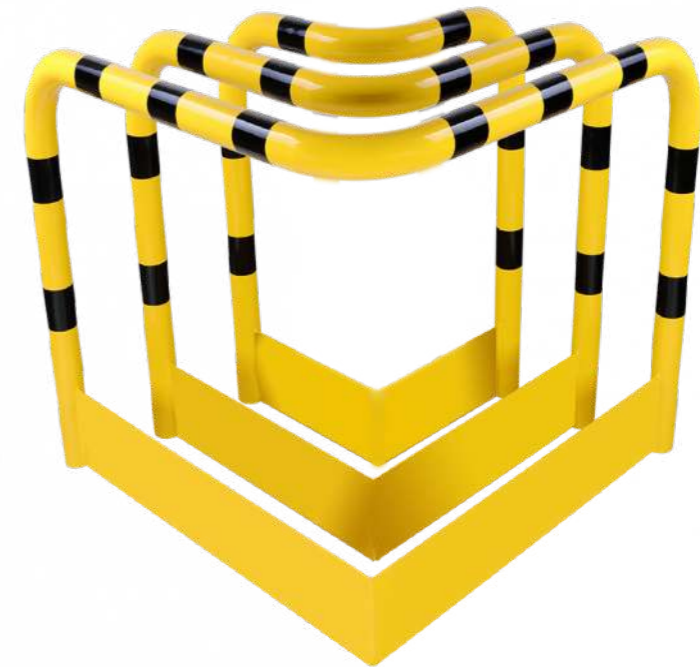
POST BUMPER



Used to protect walls, equipment, to delineate passageways.

- Bumpers powder-coated **RAL 1021** + any **RAL** color
- **Galvanized steel**
- **Zinc phosphating**

CORNER BUMPER



The warehouse bumper is designed for indoor use in industrial and storage facilities.

- Bumpers powder-coated **RAL 1021** + any **RAL** color
- **Galvanized steel**
- **Zinc phosphating**

TROLLEY BUMPER



They are used to delineate the path of forklifts, walkways, wall protection and pallet storage areas.

- Bumpers powder-coated **RAL 1021** + any **RAL** color
- **Galvanized steel**
- **Zinc phosphating**

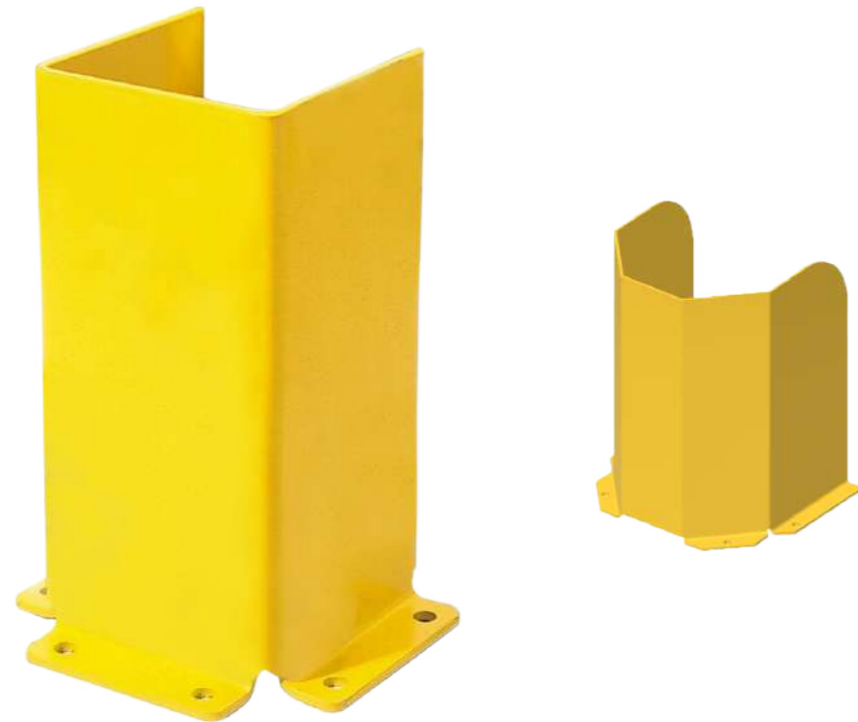
BOX BUMPER



Ground box bumper protects against unwanted impacts of moving means of transport. It is used in warehouses, production halls and other similar facilities.

- Bumpers powder-coated **RAL 1021** + any **RAL** color
- **Galvanized steel**
- **Zinc phosphating**

RACK BUMPER



Warehouse bumper available in forms **U, C, L**.
The warehouse bumper is designed for indoor use in industrial and storage facilities.

- Bumpers powder-coated **RAL 1021** + any **RAL** color
- **Galvanized steel**
- **Zinc phosphating**

TRAFFIC CONES AND FOLDING



It is used for securing off-limits areas, marking dangerous places, short-term road works.

- Made of **impact-resistant flexible plastic**
- The body of the bollard is **red with white stripes of reflective film**

SPEED BUMPS



Rubber speed bumps are a product for a wide range of road users looking to increase safety.

- They are equipped with “**cat’s eyes**” to improve the visibility of the threshold. The material used ensures many years of use and color retention.

PARKING SEPARATORS



Parking space separators with black and yellow reflective film.

Separators mark the boundary of a parking space. Effectively block the wheels of vehicles, preventing further passage. For indoor as well as outdoor use.

FLEXIBLE POSTS



Polyurethane post with high-intensity reflective tape applied, highly visible at night, impact and weather resistant. Mounted with glue or 3 screws.

RUBBER STOPWATCH



Truck wheel stops - highly visible, designed for fixing, protects trucks from rolling onto buildings. The rubber was made from recycled rubber with visible yellow stripes. Adapted for attachment to concrete or asphalt.

”

Our products are not only flexible barriers - they are elements that affect **safety and health** of people in workplaces. That's why we always focus on **quality and innovation** to make our products the best on the market.

Igor Rataj, Contex Experts





CONTEX EXPERTS

www.contexexperts.eu

E-MAIL ADDRESS

biuro@contexexperts.eu

PHONE NUMBER

+48 721 11 88 01

OUR OFFICE

**ul. Tadeusza Brzozy 6
54-115 Wrocław
Poland**